

DRUMMOND ISLAND TOWNSHIP 2020 – 2024 RECREATION PLAN

DRUMMOND ISLAND TOWNSHIP

CHIPPEWA COUNTY

MICHIGAN

—

PREPARED BY:

THE DRUMMOND ISLAND TOWNSHIP BOARD OF TRUSTEES

&

THE EASTERN UPPER PENINSULA REGIONAL PLANNING & DEVELOPMENT COMMISSION

Placeholder for Checklist

DRAFT

Placeholder for Resolution Approving Plan

DRUMMOND ISLAND TOWNSHIP BOARD OF TRUSTEES

Randy Hartman	Supervisor
Carol Havens	Clerk
Georgianna Potter	Treasurer
Earl Bailey	Trustee
Dwayne Matkovich	Trustee

DRUMMOND ISLAND TOWNSHIP RECREATION COMMITTEE

Kristy Beyer	Business Owner/ Township Resident
Lynne Coulter	Township Resident
Pam Johnson	Drummond Island Tourism Association
Dwayne Matkovich	Township Trustee
Krystal Truax	Township Resident
Steve Walker	Township Resident

DRUMMOND ISLAND TOWNSHIP CONTACT INFORMATION

Drummond Island Township
29935 E. Pine St.
P.O. Box 225
Drummond Island, MI
49726

Phone: 906.493.5321
Fax: 906.493.5404

Plan Contents

Drummond Island Township Board of Trustees	1
Drummond Island Township Recreation Committee	1
Drummond Island Township Contact Information	1
Purpose	3
Community Description	4
Administrative Structure.....	8
Parks and Recreation Budget & Funding	9
Relationships with other Agencies & Entities	10
Recreational Programming	10
Inventory	11
Parks and Recreation Facilities Owned By Township	11
Other Parks and Recreation Facilities in Township.....	14
Description of Planning & Public Input	19
Goals & Objectives	20
Action Program	22
Appendices.....	25
Appendix A: Additional Maps	25
Appendix B: Questionnaire & Analysis	29
Appendix C: Project Resources (Site Plans, Etc.).....	41
Appendix D: Public Notices & Adoption Meeting Materials.....	41
Appendix E: Post-Completion Self-Certification Reports.....	42

PURPOSE

Recreation forms the foundation of our quality of life and serves as the main attraction for residents and guests. The development of this Recreation Plan has served as a vehicle for outreach to the Drummond Island Community and the opportunity to create a blueprint which will guide the development of our recreational assets. As a remote island community, with rich natural resources and an economic reliance on tourism, how we develop recreational opportunities has a direct effect on the community members' quality of life as well as their ability to prosper economically. Planning is essential for responsible management of resources and for expanding those resources for the benefit of the community.

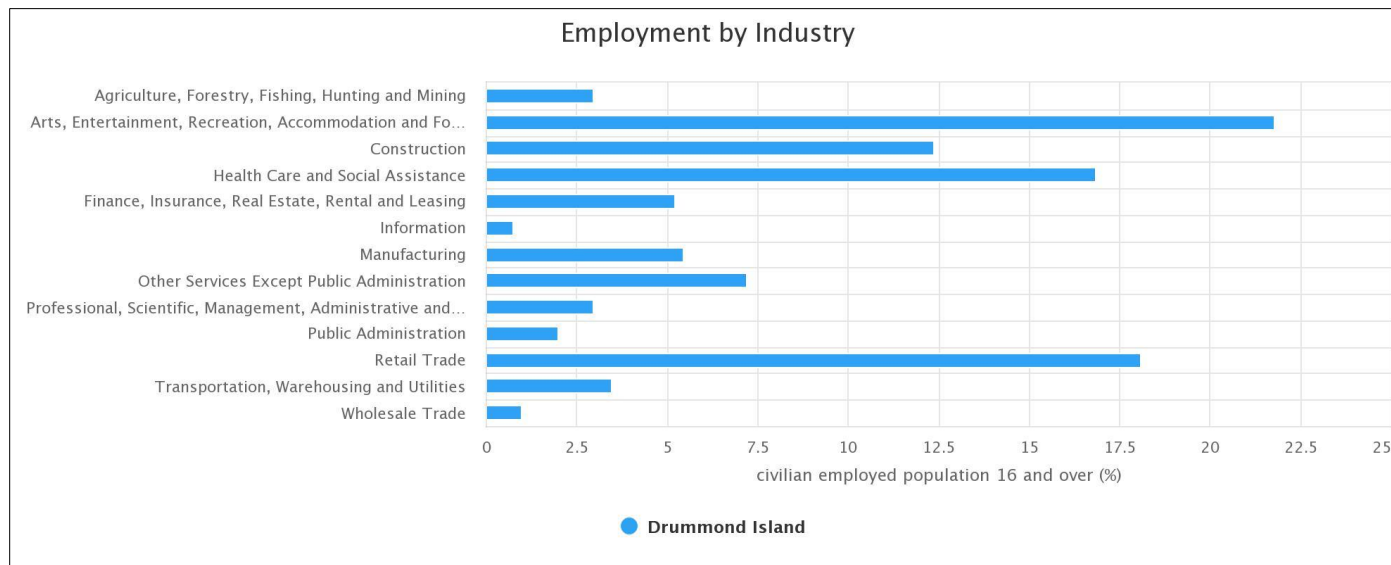
This plan will:

- Engage partners and community members as reflect their vision for the community
- Inventory and review the status of existing assets
- Analyze the challenges and opportunities for each of our recreational assets
- Develop a strategy to make feasible and impactful improvements which will support an improved quality of life and economic growth
- Facilitate DNR grant eligibility

COMMUNITY DESCRIPTION

The Gem of Lake Huron, Drummond Island lies at the north west corner of the second largest Great Lake. Drummond Island Township covers all of the Island’s 249 square miles and constitutes the easternmost end of Michigan’s Upper Peninsula. A ferry service delivers cars and passengers from the mainland hourly throughout the year and a small airport also serves private aircraft.

Island communities face unique economic and social challenges. Most of the local businesses cater to visitors to the island, and over two-thirds of the land is owned by the State of Michigan. These two factors support the recreational foundation of the community. This foundation provides for a high quality of life in a healthy natural environment. However,



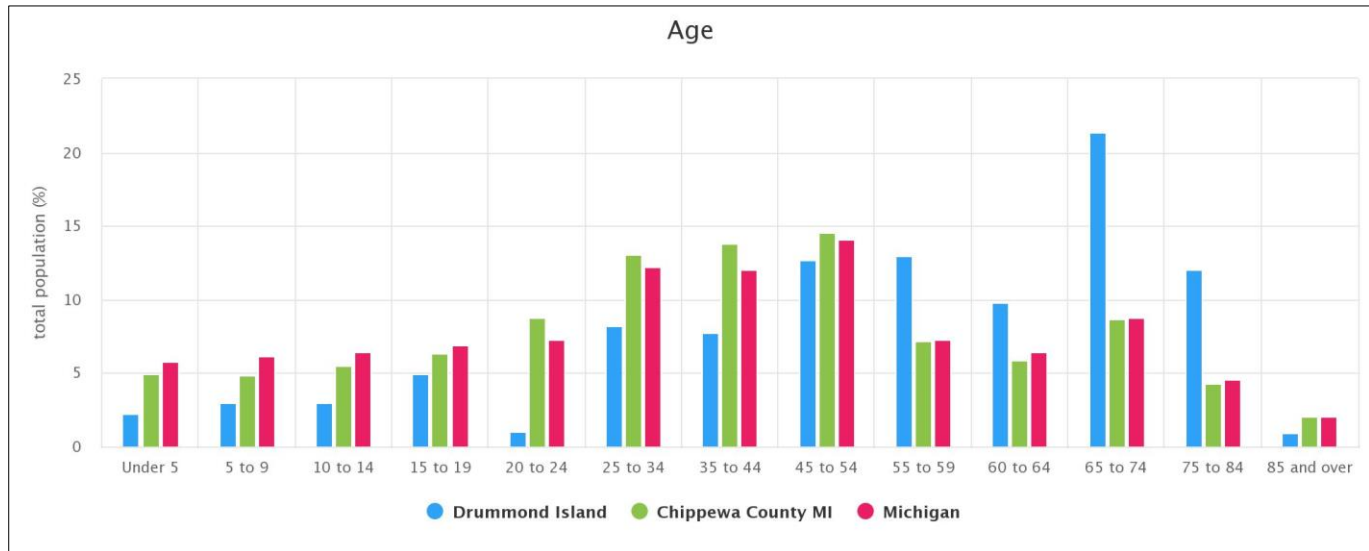
dependence on tourism means the economic wellness of the community is extremely reliant on a strong regional and national economy, and physical separation from the mainland leads to logistical barriers which require special consideration.

From the ferry dock, M-134 extends east through the island until Four Corners, where it meets with S. Townline Rd to the north, S. Shore Rd. to the south, and E. Johnswood Rd to the east. Homes and cottages hug the west and south shoreline and are scattered throughout the largely wooded island. Many year-round residences are clustered within a half mile of S. Townline Rd and E. Pine St., near the Township Hall.

In all, 1,032 people live in 491 households on Drummond Island. 85.1% of the people are white, and 10.7% are American Indian or Alaska Native. 3.7% are two or more races. 185 of the households, or about 47%, have at least one child living in them.¹

¹Source: 2016 American Community Survey 5-year estimates.

For years, the median age in the state of Michigan has been rising, yet the largest age group remains in the workforce- people ages 45 to 55. In contrast, the Drummond Island population is much older, with 34.31% of the population 65 and older, compared to 15.08% in Chippewa County and 15.42% in the State.



This particular age distribution could be explained by the fact that

the Island’s many recreational opportunities, relatively low home cost, and beautiful setting attract many retirees, however limited year-round employment and economic opportunity have also discouraged younger generations from making Drummond their year-round home. Children represent only 13.17% of the population, compared with 21.69% of Chippewa County’s population, and over a quarter of the population of Michigan.²

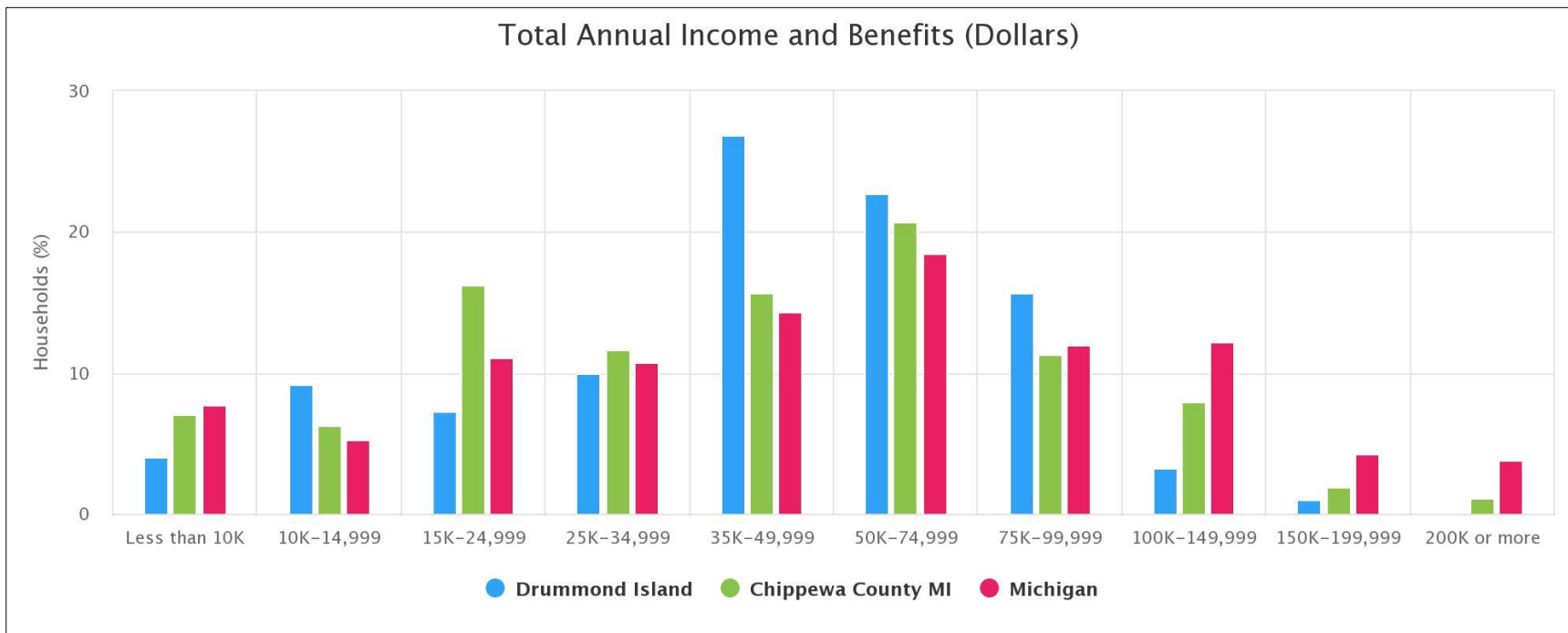
Kindergarten through sixth grade students attend Drummond Island Elementary, and then take the ferry each day to attend De Tour Middle School and De Tour High School for the remainder of their education. Graduating classes average about twenty students, with 17 graduating in 2019. Although the population has growth over the past few decades, school enrollment has decreased.

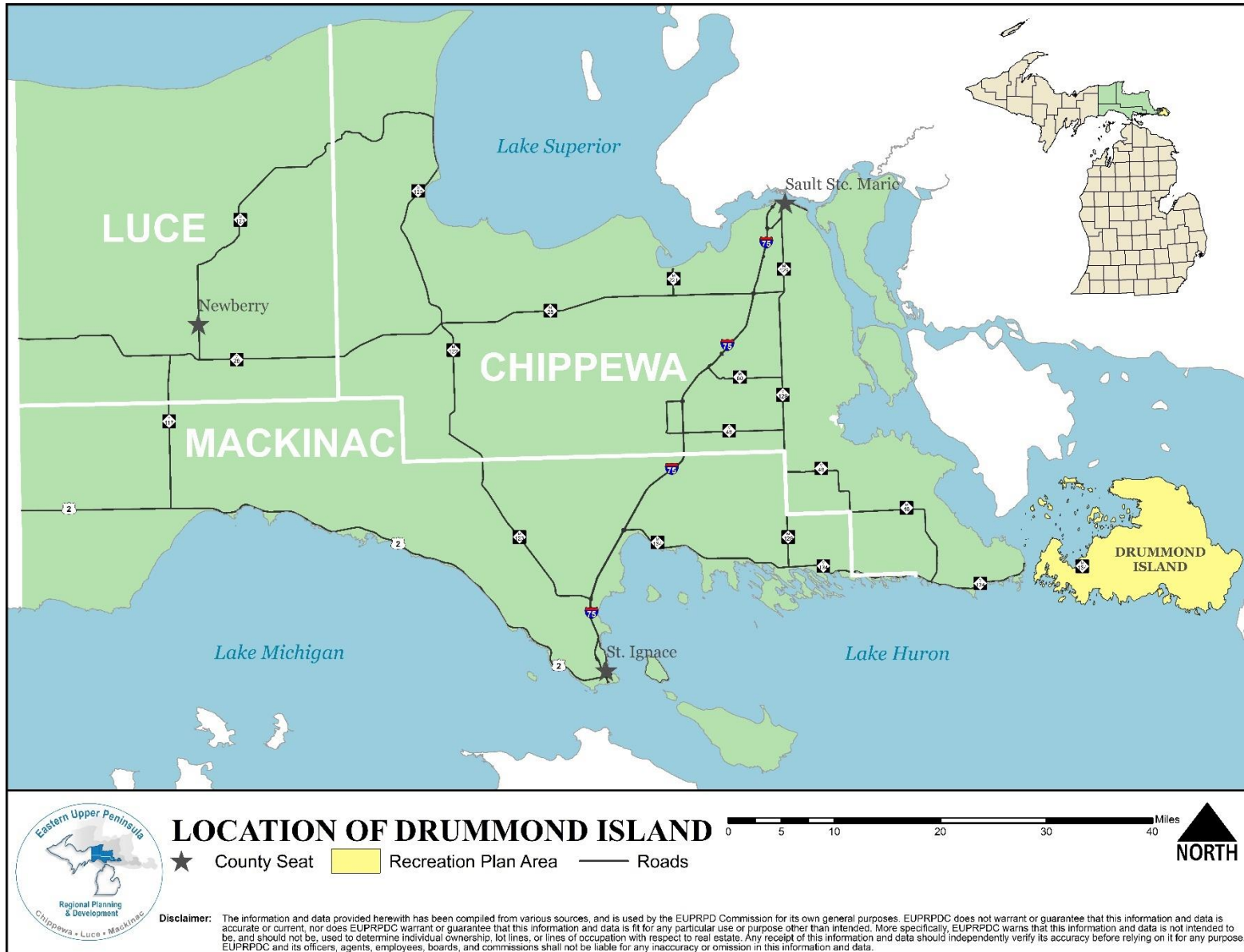
Several physician assistants are available in the Township, along with a dentist. The Drummond Island Medical Center serves residents and visitors, and these offices account for nearly 17% of employment. Of the residents, 17.4% do not have health insurance, much higher than Chippewa County (9.8%) and Michigan (8.41%).

² Source: 2016 American Community Survey 5-year estimates.

At the same time, only 4.7% of households earn below the poverty level, which is much lower than the County (15.72%) and the State (15.03%). The median household income is \$45,370, which is slightly higher than Chippewa County (\$42,287), and 10.7% lower than the State median (\$50,803).

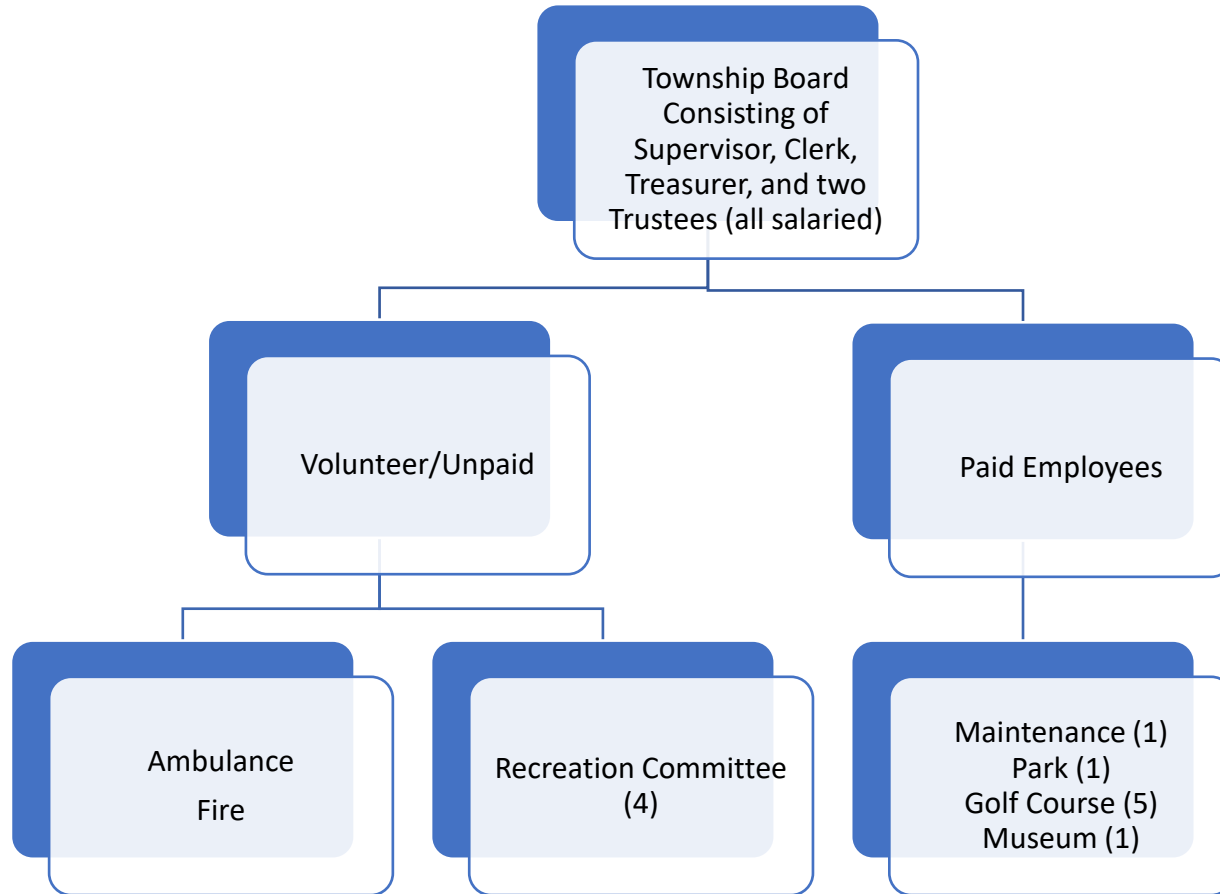
The Total Annual Income and Benefits displayed below shows household incomes in Drummond Island Township, Chippewa County, and the State of Michigan. Comparatively, Drummond Island households avoid the extreme income ranges more present in the region and state, and the smaller household size indicates a higher income per capita within each income range as well. The average household size in Michigan is 2.49, in Chippewa County it falls to 2.34, and decreases still further on Drummond Island to 1.94.





ADMINISTRATIVE STRUCTURE

Drummond Island Township administrative duties are handled by the Township Board of Trustees. This Board consists of five elected members: supervisor, clerk, treasurer, and two trustees and holds the power to commit funds for parks and recreation, accept grants, and purchase land on behalf of the community. An appointed Recreation Committee was formed in 2018 to assist in maintaining and developing recreational opportunities within the township. The recreation committee is a voluntary committee with members appointed by the Drummond Island Township Board. Drummond Island Township has one maintenance employee, one park employee, one museum employee, and five golf course employees.



PARKS AND RECREATION BUDGET & FUNDING

Monies invested in parks and recreation for Drummond Island Township have come from the general fund, fundraising, grant monies, and donations. The library, airport, golf course, ice rink and township park all have specified accounts and operating budget lines. The recreation committee plans to work with the township board of trustees on future allocations.

Past and Present Fund Balances:

<i>Fund</i>	<i>2016/2017 Balance</i>	<i>2017/2018 Balance</i>	<i>2018/2019 Balance</i>
<i>Library Fund</i>	\$26,951.86	\$36,464.77	\$38,853.46
<i>Airport</i>	\$28,420.65	\$31,540.75	\$33,374.49
<i>Golf Course</i>	\$1,409.19	\$1,139.34	\$1,404.09
<i>Ice Rink 2% Money</i>	\$15,163.59	\$20,227.05	\$30,312.62
<i>Park Improvement Fund Donations</i>	\$308.72	\$309.80	\$310.88

Past, Present, and Projected Parks and Recreation Budget:

<i>Expense Item</i>	<i>2017/2018 Budgeted</i>	<i>2017/2018 Spent</i>	<i>2018/2019 Budget</i>	<i>2018/2019 Spent</i>	<i>2019/2020 Budget</i>
<i>Airport</i>	\$22,130.00	\$15,484.09	\$27,930.00	\$28,306.74	\$28,430.00
<i>Park</i>	\$37,700.00	\$21,581.94	\$25,600.00	\$23,391.20	\$25,150.00
<i>Museum</i>	\$15,600.00	\$12,945.78	\$15,600.00	\$12,028.97	\$15,050.00
<i>Golf Course</i>	\$99,941.00	\$98,827.95	\$93,070.00	\$107,956.65	\$94,981.00
<i>Beaches</i>	\$1,000.00	\$49.49	\$1,000.00	\$375.00	\$500.00
<i>Ball Fields</i>	\$5,000.00	\$4,960.18	\$1,000.00	\$457.18	\$500.00
<i>Fireworks</i>	\$11,000.00	\$11,185.79	\$11,200.00	\$10,880.00	\$11,000.00
<i>Library</i>	\$30,000.00	\$51,701.92	\$52,000.00	\$59,134.68	\$60,000.00
<i>Skating Rink</i>	\$100.00	\$46.57	\$100.00	\$150.25	\$150.00
<i>Spring Clean Up</i>	\$20,000.00	\$17,701.15	\$20,000.00	\$22,040.93	\$22,000.00
<i>Total</i>	\$193,430.00	\$187,368.12	\$158,930.00	\$264,721.60	\$257,761.00



RELATIONSHIPS WITH OTHER AGENCIES & ENTITIES

Drummond Island Township works in conjunction with the following entities in regard to funding support, providing recreational opportunities, and technical assistance:

- Chippewa County Community Foundation
- Clark Township
- De Tour Township
- De Tour Village
- Drummond Island Tourism Association
- Eastern Upper Peninsula Regional Planning & Development Commission
- Little Traverse Conservancy
- Local Service Clubs
- Local Outdoors Groups
- Michigan Department of Natural Resources
- The Nature Conservancy
- United States Forest Service
- United States Coast Guard
- U.S. Army Corps of Engineers
- Sault Ste. Marie Tribe of Chippewa Indians

RECREATIONAL PROGRAMMING

The township maintains the ball fields, skating rink, several park areas, and supports beach clean-ups and Fourth of July Fireworks. The Township Hall is also available at no cost for free community fitness classes and other recreational group meetings. Distinct from the township, there are many recreational and hobby groups including:

- DeTour Reef Lighthouse Preservation Society
- DIGGERS
- Sportsman’s Club
- Scouts
- Local Golf Leagues
- Motorized Trail Group (ORV, Snowmobiling)
- Non-motorized Trail Group (Hiking, Biking)
- Local Service Clubs (Lions Club, Moose Lodge)
- Local Sports Leagues (Basketball, Volleyball)
- M134 North Huron Scenic Byway Advisory Committee
- Steward of Michigan Nature Association
- Little Traverse Conservancy Volunteers
- Michigan Trail Riders
- Friends of the Library
- Local Committees

INVENTORY

The data provided in this section was collected by the Drummond Island Township Recreation Committee and the Eastern Upper Peninsula Regional Planning & Development Commission (EUPRPDC) using inventories created for past iterations of this plan, internet resources including Google, www.landtrust.org, www.michigandnr.com/parksandtrails/Default.aspx#map-tab, <https://www.fs.usda.gov/recarea/hiawatha/recreation/>, Conservation And Recreation Lands (CARL), GIS data obtained from Ducks Unlimited, and additional GIS data possessed by EUPRPDC. The assets inventoried below are all located on Drummond Island and serve residents in addition to thousands of visitors every year.

ADA COMPLIANCE RANKING EACH FACILITY:

- 1 = None of the facilities/park area meets accessibility guidelines.
- 2 = Some of the facilities/park area meets accessibility guidelines.
- 3 = Most of the facilities/park area meets accessibility guidelines.
- 4 = The entire facility/park area meets accessibility guidelines.
- 5 = The entire facility/park area was developed/renovated using the principals of universal design.

PARKS AND RECREATION FACILITIES OWNED BY TOWNSHIP

Drummond Island Township Park

Size: 192 acres
Location: 45.99406, -83.785669
Accessibility: 3
Map #: 2

The Drummond Island Township Park features camping, a sandy beach, and 3-mile Heritage Trail. Camping It is a first come, first served park, no reservations.



Drummond Island Township Hall

Size: Approximately 4 acres
Location: 46.020718, -83.739846
Accessibility: 4
Map #: 7

The Drummond Island Township Hall includes a meeting area which is used by community groups for a variety of recreational activities.



Drummond Island Township Golf Course

Size: 91.7 acres
Location: 46.006977, -83.741355
Accessibility: 4
Map #: 8

The Drummond Island Township Golf Course is a 9-hole, par 36 course with affordable rates. It was built in the early 1960s and is similar to the old-style English courses. It offers a unique feature: there is an airport runway that runs along the side of the par 3 No. 4. The course not only has nine holes for you to enjoy, but they also offer a driving range, practice putting green and pro shop. There are carts available to rent as well. The course opens in the spring and closes mid-fall.



Drummond Island Historical Museum

Size: .66 acres
Location: 46.021897, -83.745576
Accessibility: 4
Map #: 4

This local museum emphasizes artifacts of Native Americans, Finnish farmers, and Yankee settlers from the island's early historical period. Other displays cover the British Fort Drummond, the lumber era, sporting camps, ferry boats, and the island's rich fishing and boating history. All housed in our new museum constructed of hand-hewn Drummond Island logs. The fireplace was made from the stones of a chimney at Fort Drummond.



Betsy Seaman Memorial Park

Size: .75 acres

Location: 46.022456, -83.745454

Accessibility: 3

Map #: 5

Directly across the street from the museum, a memorial park was established to honor Betsy Seaman who raised a family of 15 children at this site. Her husband, Daniel died in 1863. The park extends around the bluff and down to the water's edge and provides tables and benches for picnicking, resting or sightseeing.



Big Shoal Bay Beach

Size: 1.5 acres

Location: 45.940975, -83.606146

Accessibility: 2

Map #: 14

Big Shoal Bay Beach is a Township Park but does not permit overnight camping. The park has a parking lot, out-door toilet, narrow sandy beach, picnic tables and spectacular vistas out through the islands of the cove. The beach is also a wonderful place to launch your kayak or canoe.



Skating Rink

Size: .17 acres

Location: 46.021082, -83.739090

Accessibility: 4

Map #: 6

The Township maintains an outdoor ice-skating rink in the winter months.



Ball Fields

Size: 6.18 acres

Location: 46.01606, -83.741201

Accessibility: 3

Map #: 15

The ball fields adjoin the school property but are maintained by the Township. The fields are used by students and local leagues as well as informally by the community.



OTHER PARKS AND RECREATION FACILITIES IN TOWNSHIP

Harbor Island National Wildlife Refuge

Size: 695 acres

Location: 46.048091, -83.759713

Accessibility: 1

Map #: 3

This 695-acre island became part of the National Wildlife Refuge system in 1983 when the U.S. Fish and Wildlife Services purchased it from The Nature Conservancy. Harbor Island is overseen by the Seney National Wildlife Refuge in Seney, Michigan. It has never been timbered or dredged. Harbor Island is zoologically and botanically rich and is part of the North Huron Birding Trail.



School Sporting Fields and Gym

Size: 9.7 acres

Location: 46.015963, -83.741213

Accessibility: 4

Map #: 15

The Drummond Island Elementary School has several recreational assets which are used by students and the public. These include: an indoor gym, baseball fields and a playground.



Clyde and Martha Williams Nature Preserve

Size: 80 acres

Location: 46.020666, -83.731546

Accessibility: 1

Map #: 9

The Williams Preserve is mostly forested, and a 1.3-mile trail system has been developed. Fallow agricultural fields now vegetated with bracken fern, blackberry, and various tree seedlings and saplings are present in small areas. Fissured bedrock is visible at the surface in some spots. Ancient post-glacial lake shorelines are evident on the Preserve. An old stone wall built by early Island settlers is located in the east part of the Preserve.



Curtis Anderson Preserve

Size: 46 acres

Location: 46.004966, -83.862094

Accessibility: 1

Map #: 1

Owned and managed by the Little Traverse Conservancy, this area consists of donated land that is just back from the shore of Lake Huron on the North shore of Drummond Island.



Maxton Plains Preserve

Size: 1,185 acres

Location: 46.074625, -83.661538

Accessibility: 1

Map #: 10

Drummond Island has one of the largest, best preserved Alvar plant communities in the world. This habitat supports rare plant and animal life. This preserve is owned and managed by The Nature Conservancy



Fossil Ledges

Size: 1.8 miles of shoreline
Location: 46.095387, -83.614643
Accessibility: 1
Map #: 11

On the north shore of Drummond Island, you will find the fossil ledges. The “ledges” are made up of the fossilized remains of a salt water coral bed. The "Ledges" is a unique place formed by nature that not many people know about or get to visit. The journey there can be a bit tricky, so be prepared for some off-roading. However, it is worth your while if you have a vehicle with high clearance.



Marblehead

Size: 8.35 acres
Location: 45.987668, -83.475689
Accessibility: 1
Map #: 13

Rock shelves lead to the tall rock formation known as Marble Head looks out over Lake Huron from about 100 feet above the waves. To get to the top you first drive out to the trail and then pick a spot to hike from. The road becomes extremely rough the further you go.



Glen Cove

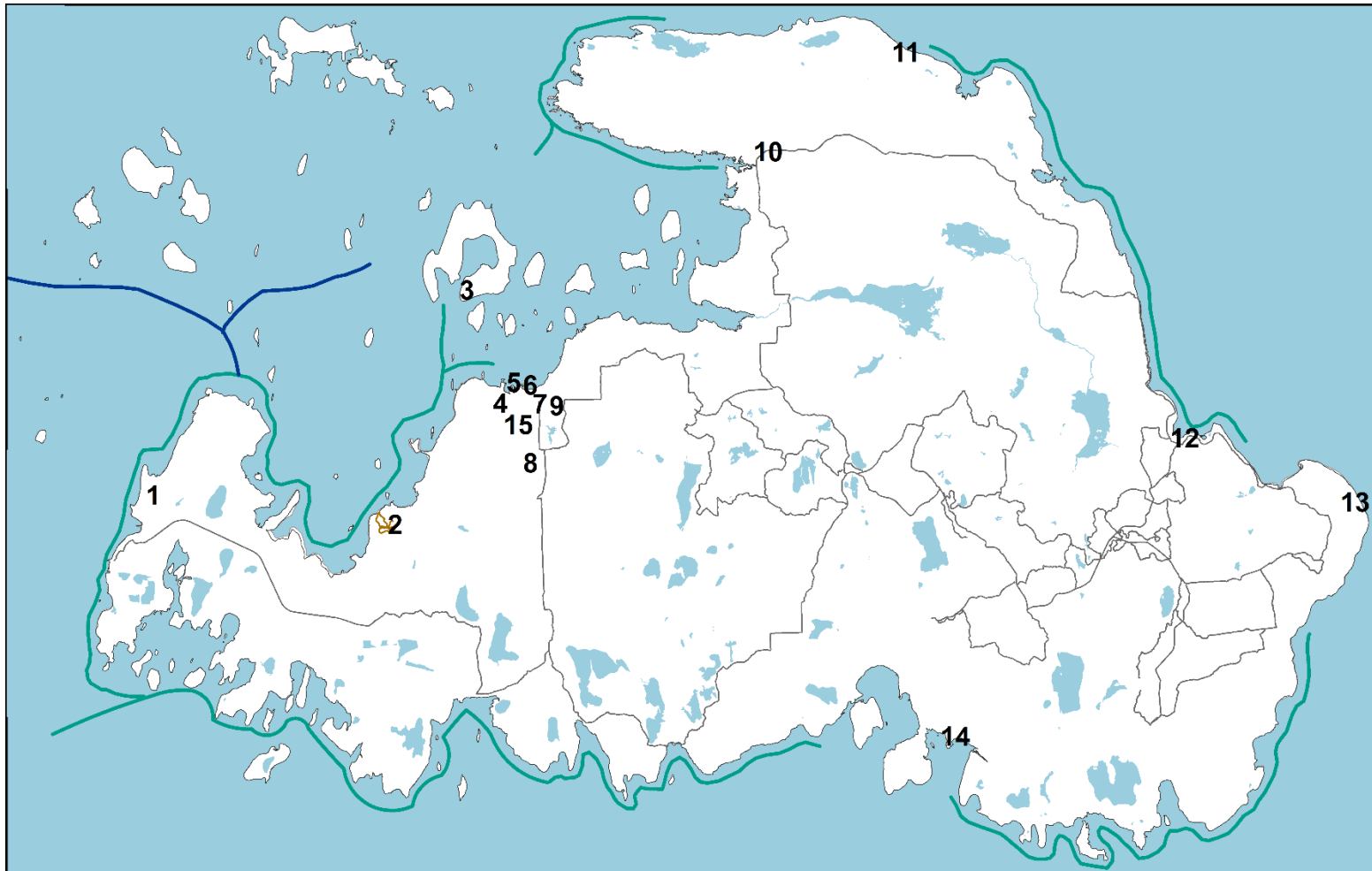
Size: 1.19 miles of shoreline
Location: 46.005757, -83.532875
Accessibility: 1
Map #: 12

Glen Cove Beach is located on the eastern end of Drummond Island. Tent camping is permitted on the beach and you may also build a campfire; be sure to extinguish the fire if you leave your campsite. The floor of the swimming beach is sandy and extends out quite a distance; however, keep an alert eye on your children, as there are no lifeguards. The sandy beach is great for launching your kayak or canoe for the cove is fairly sheltered from the wind.



See the *Drummond Island Township: Recreation Inventory* map on the following page; see maps in Appendix A to reference land cover, land ownership, and elevation.

In addition to the assets above, hundreds of miles of ORV and snowmobile trails cover all corners of the Island. They are one of the major draws and the basis for several events throughout the year.



RECREATION FOR DRUMMOND ISLAND

- | | | |
|--------------------------------------|---|---|
| 1. Curtis Anderson Preserve | 6. Skating Rink | 11. Fossil Ledges |
| 2. Drummond Island TWP Park | 7. Town Hall | 12. Glen Cove |
| 3. Harbor Island Nat Wildlife Refuge | 8. Golf Course | 13. Marble Head |
| 4. Drummond Island Historical Museum | 9. Clyde & Martha Williams Nat Preserve | 14. Big Shoal Bay Beach |
| 5. Betsy Seaman Memorial Park | 10. Maxton Plains | 15. School Sporting Fields & School Gym |



- | | | |
|--------------------------------------|------------------------|---------------------|
| — Snowmobile Trails | — Heritage Water Trail | — Lakes & Waterways |
| — Drummond Island Explorer H2O Trail | — Heritage Trail | — Rivers |

Disclaimer: The information and data provided herewith has been compiled from various sources, and is used by the EUPRPD Commission for its own general purposes. EUPRPDC does not warrant or guarantee that this information and data is accurate or current, nor does EUPRPDC warrant or guarantee that this information and data is fit for any particular use or purpose other than intended. More specifically, EUPRPDC warns that this information and data is not intended to be, and should not be, used to determine individual ownership, lot lines, or lines of occupation with respect to real estate. Any receipt of this information and data should independently verify its accuracy before relying on it for any purpose. EUPRPDC and its officers, agents, employees, boards, and commissions shall not be liable for any inaccuracy or omission in this information and data.

DESCRIPTION OF PLANNING & PUBLIC INPUT

Drummond Island Township Board appointed the Recreation Committee to carry out the necessary actions required when putting together a recreation plan. Throughout several meetings, the committee compiled and reviewed plan materials and survey results. The Recreation Committee, in conjunction with the Eastern Upper Peninsula Regional Planning & Development Commission, solicited public input in the following ways:

- Public Input Questionnaire
 - This questionnaire was made available online on 5/30/2018 and was completed by 157 people.
- Public Comment Period
 - The Plan was made available online at <http://www.eup-planning.org/drummond-island-recreation-plan> and hard copies were also available for review at the Drummond Township Hall from August 12, 2019 to September 30, 2019.
- Public Hearing
 - The Public Hearing was used to give members of the public an opportunity to speak before the board and the recreation committee and express their thoughts on the final draft of the plan. It was held on 10/1/19.

To see the full questionnaire and public input results, including public notices placed in the local papers, please refer to Appendixes B and D.

GOALS & OBJECTIVES

The purpose of this 5-year plan for Drummond Island Township is to expand the recreational opportunities for township residents and visitors. To make this a reality, this plan will work to achieve three main goals. Each goal will have objectives to guide progress through various initiatives and projects. The next section, Action Program, will delineate when, where, and how certain objectives will be met by Drummond Island Township.

The rationale for these goals and objectives are rooted in the insights gleaned from the Recreation Questionnaire as well as from discussions with the Drummond Island Township Board of Trustees. Additional guidance was provided by data gathered by the Drummond Island Tourism Association, which revealed that hiking, sightseeing, and off-roading were the top three activities people wanted information on, based on the requests of the hundreds of people that stopped by their offices between June 24 and August 25.

According to the survey results, walking, boating, swimming, kayaking, hunting, and ATV/ORVing were the most popular activities, and respondents were most interested in expanding opportunities for water access, bike paths, and hiking trails.

Goal 1: Expand and Promote Water Access throughout the Township.

RATIONALE: THREE OF THE TOP FIVE POPULAR ACTIVITIES AND THREE OF THE TOP FIVE RANKED PRIORITIES FROM THE SURVEY WERE DIRECTLY RELATED TO WATER ACCESS, AND INCREASING WATER ACCESS WAS THE TOP CHOICE FOR SURVEY RESPONDANTS.

OBJECTIVES:

- 1.1: Develop a kayak launch at Scammon Cove.
- 1.2: Build a fishing pier.
- 1.3: Initiate annual Township Park beach clean-up.
- 1.4: Township Park boat launch improvements.

Goal 2: Expand the Trail Systems and Park Amenities.

RATIONALE: THE CURRENT TRAIL SYSTEMS ARE WELL-USED, AND ADDITIONAL AMENITIES WILL INCREASE THE PUBLIC'S ENJOYMENT. ADDITIONAL ROUTES WILL INCREASE OPPORUNTUNITY FOR RECREATION AND CONNECT THE TOWNSHIP TO TRAIL SYSTEMS THAT CURRENTLY END AT THE DETOUR FERRY DOCK. INSTALLING IMPROVED AMENITIES AT THE PARKS WHICH SERVE AS ANCHORS FOR THE TRAIL SYSEMS WILL ALSO SUPPORT RESPONSIBLE TRAIL USE.

OBJECTIVES:

- 2.1: Install portable toilets located at Glen Cove.
- 2.2: Clean up Glen Cove wooded area.
- 2.3: Heritage Trail parking lot improvements, including improved signage.
- 2.4: Develop a new road into the Township Park using previous logging road and Heritage Trail parking lot.
- 2.5: Develop trailhead parking lot at the Township Park with signage and camera security.
- 2.6: Install benches and wildlife statues for trailhead parking lot at the Township Park.
- 2.7: Install bathrooms and showers at the Township Park.
- 2.8: Dump station at Township Park.
- 2.9: Develop a trailhead parking area at Scammon Cove.
- 2.10: Install portable toilets and pavilion at Scammon Cove.
- 2.11: Install portable toilets Bass Cove trailhead.
- 2.12: Develop a bike path from Four Corners to Town Hall and a walking path at the Elementary School.

Goal 3: Capitalize on and Further Develop Drummond Township’s Recreation-Based Sense of Place.

RECREATION MAKES DRUMMOND ISLAND UNIQUE FOR BOTH RESIDENTS AND VISITORS. RECREATION-BASED PLACE MAKING EFFORTS WILL MEET PUBLIC EXPECTATIONS AND SUPPORT AN ENHANCED QUALITY OF LIFE.

OBJECTIVES:

- 3.1: New framework for the corner signs (including planters for flowers or wildlife statues).
- 3.2: Expand the water garden.
- 3.3: Build pit toilets at ferry dock.
- 3.4: Build a Freighter/Lighthouse viewing platform at the ferry dock.
- 3.5: Install weather cams at the ferry dock.
- 3.6: Develop an information kiosk at ferry dock.
- 3.7: Build a birding platform located at the Potagannissing Wildlife Flooding.
- 3.8: Develop a roof for the ice rink at the Township Hall.

ACTION PROGRAM

The action plan for this five-year plan will be dictated by the monies available through grants, fundraising, donations, and general township funds. These projects can be realized through the cooperation, assistance, and expertise of county, state and federal governments. This recreation plan may be amended at any time during its five years to change priority or to add or change goals and objectives with public opinion and input. **All development projects will be held to universal compliance and American Disability Act standards.**

Funding Sources:

- Township funds
- Local funds (local service organizations and businesses; donations and fundraising)
- Sault Ste. Marie Tribe of Chippewa Indians: 2 percent funds
- MDNR: Michigan Natural Resources Trust Fund (MNRTF)—min. 25 percent match
- MDNR: Land & Water Conservation Fund (LWCF)—50 percent match
- MDNR: Recreation Passport (RP)—min. 25 percent match
- MDEQ: Coastal Zone Management (CZM)—50 percent match
- MDOT: Transportation Alternatives Program

2020

Recreation Site	Project	Project Cost	Funding Sources
Ferry Dock	Information kiosk	\$40,000	DNR, EGLE, MDOT, local donations
Ferry Dock	Pit toilets	20,000	DNR, EGLE, MDOT, local donations
Ferry Dock	Freighter/lighthouse viewing platform	\$44,000	CZM, DRPLS
Ferry Dock	Weather cameras	\$500	Local donations
DITA Office	Expand Water Garden-Phase 2	\$5,000	Private entities

2021

Recreation Site	Project	Project Cost	Funding Sources
Potagannissing Wildlife Flooding	Birding platform	\$5,000	Little Traverse Conservancy, Local
Township Park	Heritage Trail parking lot improvements/ Improved signage	\$5,000	Township, private donations
Township Park	Engineering & Approvals for road/parking lot	\$5,000	Township, private donations
Betsy Seaman Memorial Park	Engineering & Approvals for Fishing Pier	\$5,000	Township, private donations

2022

Recreation Site	Project	Project Cost	Funding Sources
Township Park	Portable toilet at trailhead parking area	\$20,000	Private donations, LWCF, RP
Township Park	New Road into Township Park using previous logging road/Heritage Trail parking lot	\$30,000-50,000	MDOT, Chippewa County Road Commission, Local
Township Park	Trailhead parking lot at the Township Park with signage and camera security	\$15,000	Private donations, LWCF, RP
Betsy Seaman Memorial Park	Fishing Pier	\$1.5 million	DNR, EGLE, MDOT, CZM, US Fish & Wildlife, Great Lakes Fisheries Trust Fund, USDA, local

2023

Recreation Site	Project	Project Cost	Funding Sources
Township Park	Benches and wildlife statues for trailhead parking lot	\$1,000	Private and public foundations
Township Park	Beach clean-up and boat launch improvements	\$10,000	Township, EGLE, DNR, CZMF
Township Park	Dump station	\$45,000	Township, EGLE, DNR, CZMF
Township Hall	Engineering for Roof on Ice Rink	\$5,000	Township, EGLE, DNR, CZMF

2024

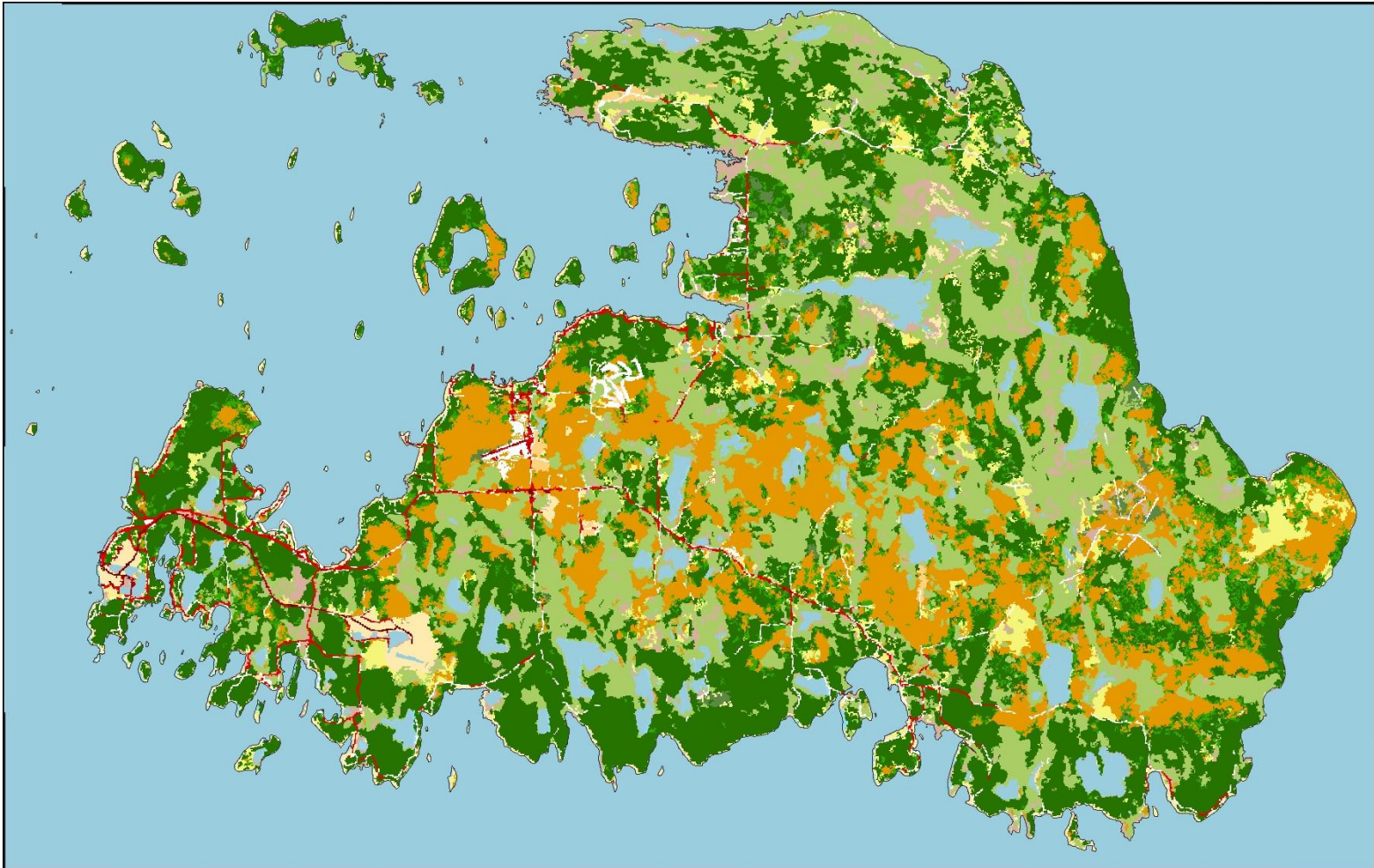
Recreation Site	Project	Project Cost	Funding Sources
Township Hall	Roof for ice rink	\$180,000	Private donations, LWCF, RP
Scammon Cove	Land acquisition for historical park development	\$250,000	MNRTF

APPENDICES

APPENDIX A: ADDITIONAL MAPS

The maps on the following pages were produced by the Eastern Upper Peninsula Regional Planning & Development Commission using data procured from the following sources:

- Drummond Island Township: Land Cover
 - Source: National Land Cover Database 2011, which was created by the Multi-Resolution Land Characteristics Consortium.
- Drummond Island Township: Land Ownership
 - Source: Michigan Department of Natural Resources (2014) via the Center for Shared Solution, Michigan Department of Information Technology; and U.S. Department of Agriculture, Forest Service (2012).
- Drummond Island Township: Elevation
 - Source: Michigan Department of Technology, Management and Budget via the Center of Geographic Information.

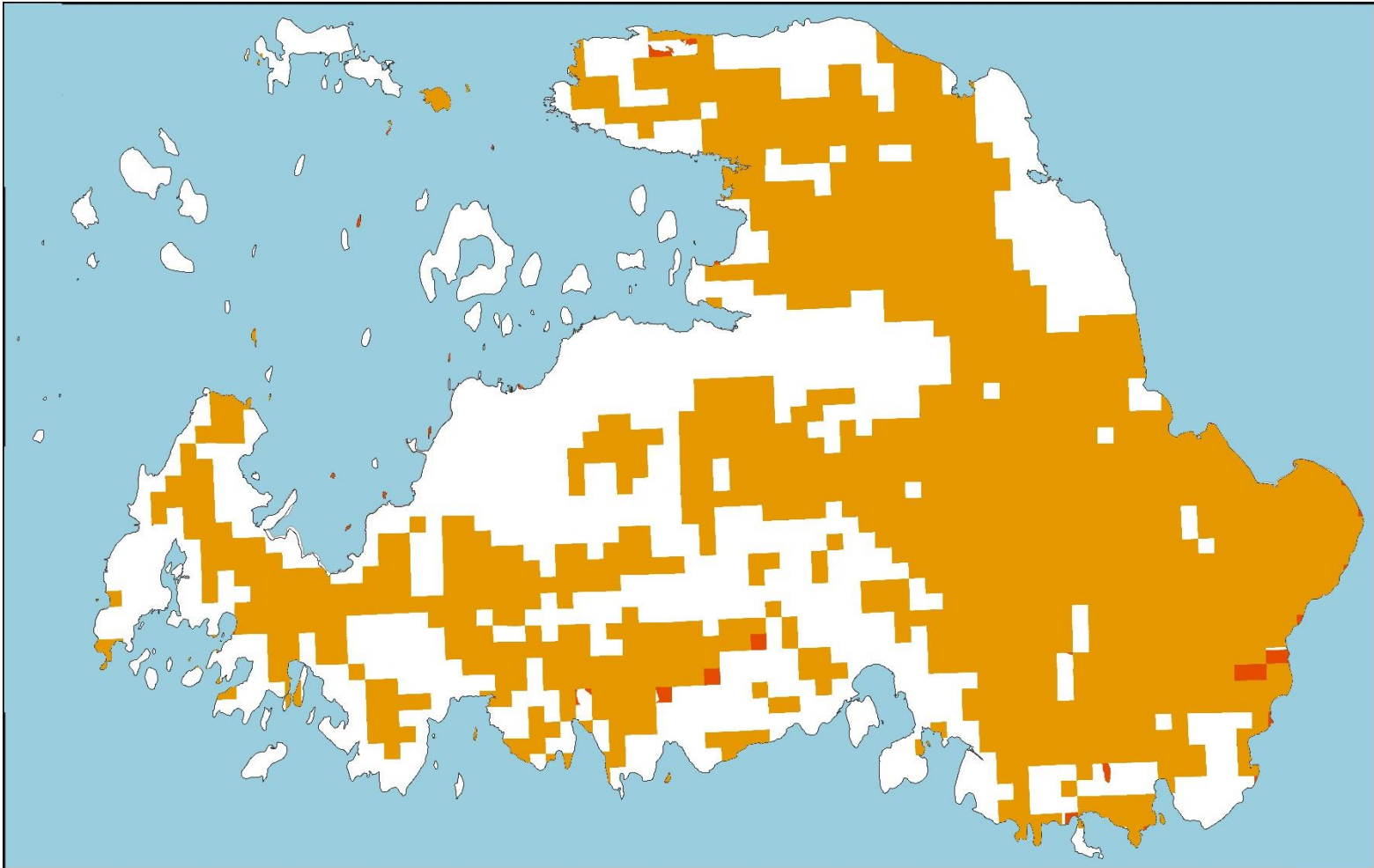


LAND COVER FOR DRUMMOND ISLAND

- | | | | | |
|------------------|-----------------------------|------------------------------|------------------|----------------|
| Barren Land | Developed, High Intensity | Emergent Herbaceous Wetlands | Herbaceous | Shrub/Scrub |
| Cultivated Crops | Developed, Low Intensity | Evergreen Forest | Mixed Forest | Woody Wetlands |
| Deciduous Forest | Developed, Medium Intensity | Hay/Pasture | Lakes and Rivers | |



Disclaimer: The information and data provided herewith has been compiled from various sources, and is used by the EUPRPDC Commission for its own general purposes. EUPRPDC does not warrant or guarantee that this information and data is accurate or current, nor does EUPRPDC warrant or guarantee that this information and data is fit for any particular use or purpose other than intended. More specifically, EUPRPDC warns that this information and data is not intended to be, and should not be, used to determine individual ownership, lot lines, or lines of occupation with respect to real estate. Any receipt of this information and data should independently verify its accuracy before relying on it for any purpose. EUPRPDC and its officers, agents, employees, boards, and commissions shall not be liable for any inaccuracy or omission in this information and data.



LAND OWNERSHIP OF DRUMMOND ISLAND

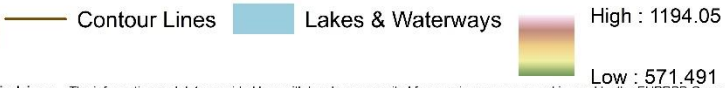
- Lakes & Waterways
- State of MI Ownership
- State Land
- Other (County, Township, Private)



Disclaimer: The information and data provided herewith has been compiled from various sources, and is used by the EUPRPD Commission for its own general purposes. EUPRPDC does not warrant or guarantee that this information and data is accurate or current, nor does EUPRPDC warrant or guarantee that this information and data is fit for any particular use or purpose other than intended. More specifically, EUPRPDC warns that this information and data is not intended to be, and should not be, used to determine individual ownership, lot lines, or lines of occupation with respect to real estate. Any receipt of this information and data should independently verify its accuracy before relying on it for any purpose. EUPRPDC and its officers, agents, employees, boards, and commissions shall not be liable for any inaccuracy or omission in this information and data.



ELEVATION OF DRUMMOND ISLAND



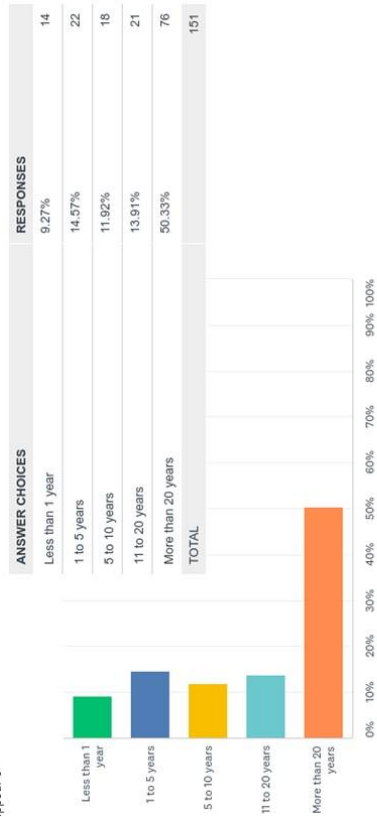
Disclaimer: The information and data provided herewith has been compiled from various sources, and is used by the EUPRPD Commission for its own general purposes. EUPRPDC does not warrant or guarantee that this information and data is accurate or current, nor does EUPRPDC warrant or guarantee that this information and data is fit for any particular use or purpose other than intended. More specifically, EUPRPDC warns that this information and data is not intended to be, and should not be, used to determine individual ownership, lot lines, or lines of occupation with respect to real estate. Any receipt of this information and data should independently verify its accuracy before relying on it for any purpose. EUPRPDC and its officers, agents, employees, boards, and commissions shall not be liable for any inaccuracy or omission in this information and data.

APPENDIX B: QUESTIONNAIRE & ANALYSIS

The Drummond Island Township Questionnaire was promoted in the Drummond Island Digest, a local monthly paper, and shared on local popular social media pages via this link: <https://www.surveymonkey.com/r/DrummondRec>. Paper copies of the questionnaire were also available at the DITA offices. 157 responses were collected between May 30 and September 30, 2018. Here is the survey response data:

Q1: How long have you been a local resident?

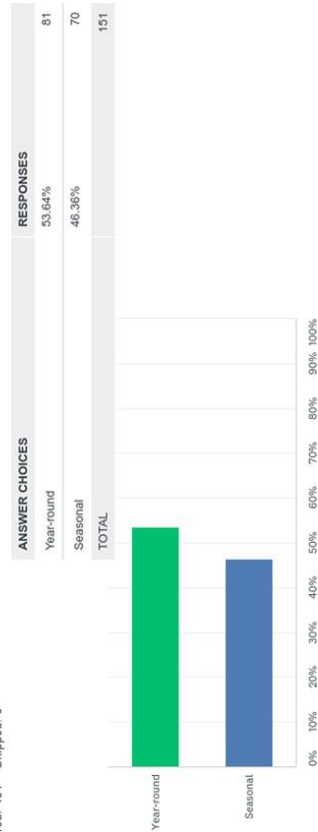
Answered: 151 Skipped: 6



Powered by SurveyMonkey

Q2: Which kind of resident are you?

Answered: 151 Skipped: 6



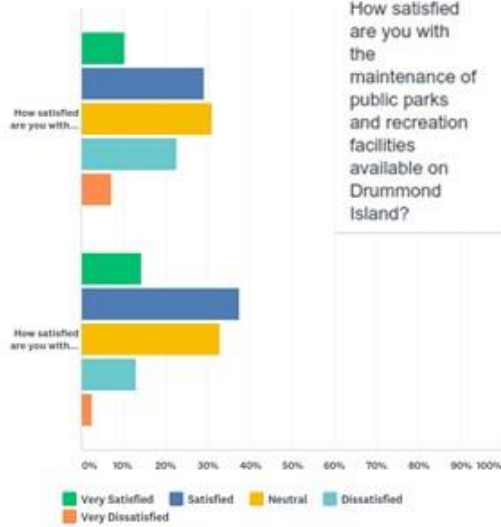
Powered by SurveyMonkey

Q3: Overall,

Answered: 155 Skipped: 2

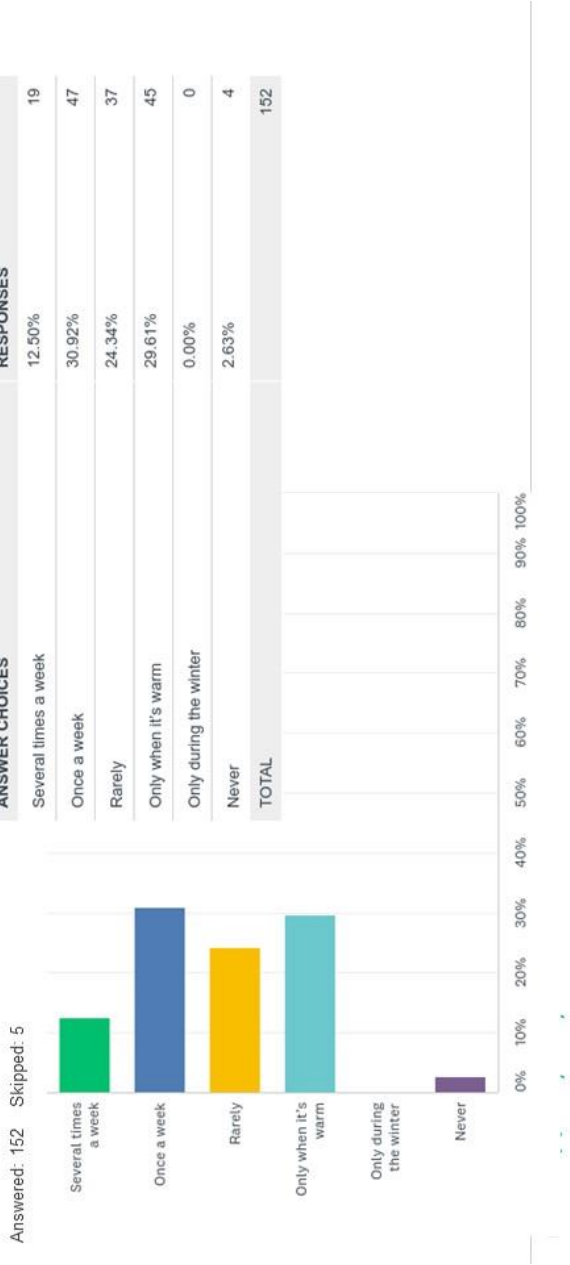
	VERY SATISFIED	SATISFIED	NEUTRAL	DISSATISFIED	VERY DISSATISFIED	TOTAL	WEIGHTED AVERAGE
How satisfied are you with the present number of public parks and recreation facilities available on Drummond Island?	10.32% 16	29.03% 45	30.97% 48	22.58% 35	7.10% 11	155	3.13

Q3 Overall,



	VERY SATISFIED	SATISFIED	NEUTRAL	DISSATISFIED	VERY DISSATISFIED	TOTAL	WEIGHTED AVERAGE
How satisfied are you with the maintenance of public parks and recreation facilities available on Drummond Island?	14.19% 22	37.42% 58	32.90% 51	12.90% 20	2.58% 4	155	3.48

Q4: Approximately how often during the past year did you, or members of your household, use or visit any public park or recreation facility on Drummond Island?



Q5: What kind of activities do you engage in?

Comment responses:

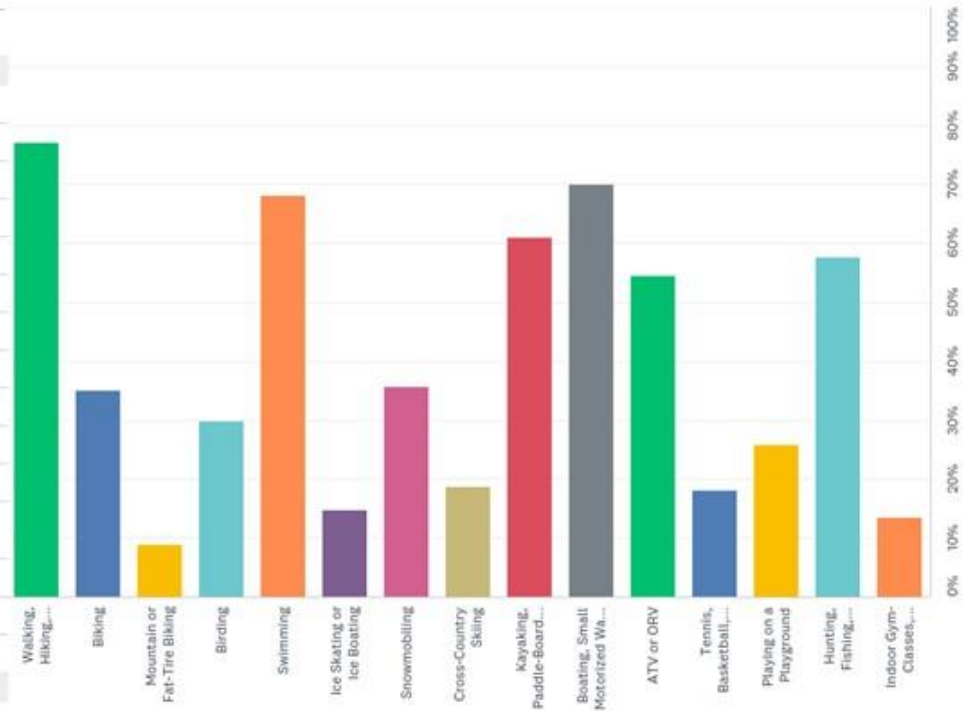
- mushrooming
- DI golf course and the Rock golf course
- golf
- Disc Golf Course would be an amazing addition!
- Camping
- Camping
- Library
- botanizing
- flying my drone
- Golfing
- Sailing
- Golfing
- none
- Horseback riding
- Photography
- Wildlife and landscape photography
- Camping
- Golf
- Snowshoeing

Camping Photography **Golf**

Q5: What kind of activities do you engage in? (check all that apply)

Answered: 154 Skipped: 3

ANSWER CHOICES	RESPONSES
Walking, Hiking, Snowshoeing or Running	77.27% 119
Biking	35.06% 54
Mountain or Fat-Tire Biking	9.09% 14
Birding	29.87% 46
Swimming	68.18% 105
Ice Skating or Ice Boating	14.94% 23
Snowmobiling	35.71% 55
Cross-Country Skiing	18.83% 29
Kayaking, Paddle-Boarding or Canoeing	61.04% 94
Boating, Small Motorized Water Crafts, Water Skiing, Wake-Boarding etc.	70.13% 108
ATV or ORV	54.55% 84
Tennis, Basketball, Soccer, Baseball, Softball or Other Court or Field-Based Sports	18.18% 28
Playing on a Playground	25.97% 40
Hunting, Fishing, Trapping, Shooting etc.	57.79% 89
Indoor Gym- Classes, Leagues etc.	13.64% 21
Total Respondents: 154	

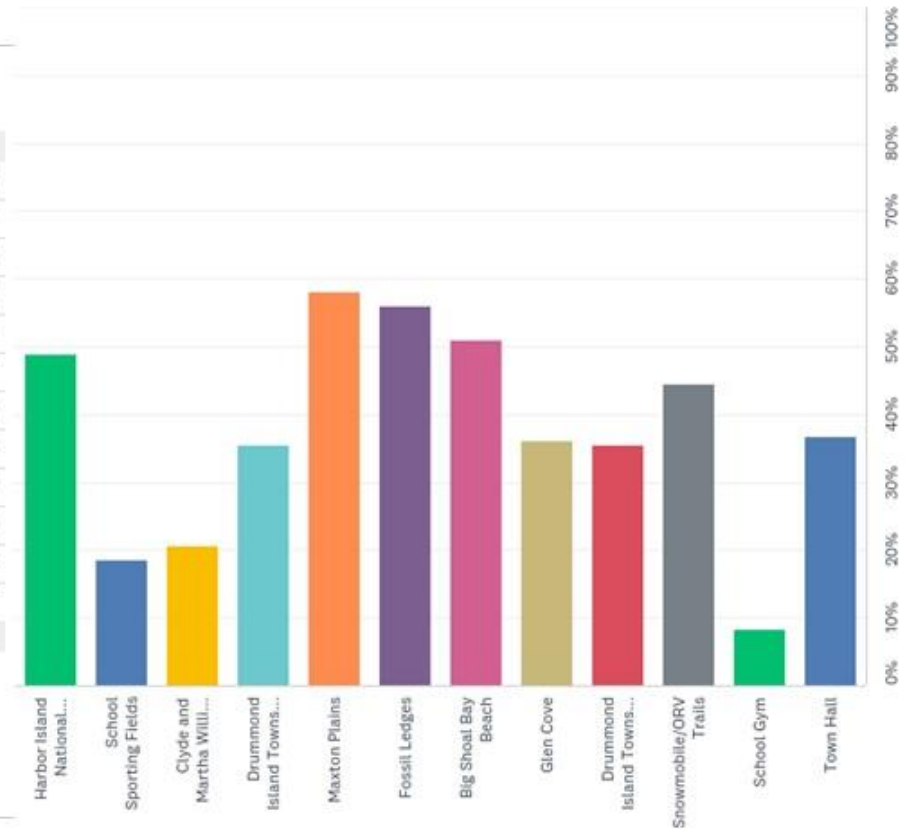


Powered by  SurveyMonkey

Q6: Which parks or recreation facilities do you use frequently? (check all that apply)

Answered: 155 Skipped: 2

ANSWER CHOICES	RESPONSES	
Harbor Island National Wildlife Refuge	49.03%	76
School Sporting Fields	18.71%	29
Clyde and Martha Williams Nature Preserve	20.65%	32
Drummond Island Township Park	35.48%	55
Maxton Plains	58.06%	90
Fossil Ledges	56.13%	87
Big Shoal Bay Beach	50.97%	79
Glen Cove	36.13%	56
Drummond Island Township Park Beach	35.48%	55
Snowmobile/ORV Trails	44.52%	69
School Gym	8.39%	13
Town Hall	36.77%	57
Total Respondents: 155		



Powered by  SurveyMonkey



Q6: Which parks or recreation facilities do you use frequently?

Comment responses:

- Twp Golf Course
- Twp Golf Course
- Golf Course
- Marble head and turtle ridge.
- Curtis & Margret Anderson Preserve
- Chris & Margret Anderson Preserve
- Rainbow X-C Ski Trail
- Zeevip & Anderson Preserves
- The township park is unusable
- Ice rink at hall
- library and
- Yacht haven beach
- Marble Head, Township golf course, Haritage Trail
- Golf course
- Maxton boat launch
- I didn't know some of these were available. The school gym, town hall?
- Golf
- Rainbow Trail-XC Trail

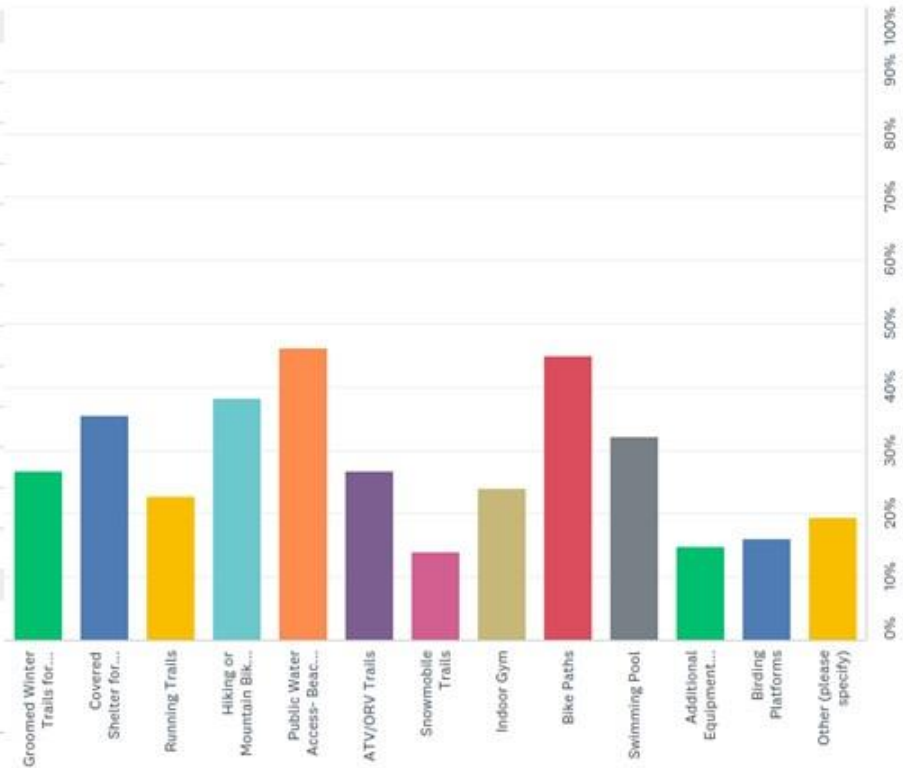
Hall Marble Head Trail Margret Anderson Preserve Golf Course
Township

Powered by  SurveyMonkey

Q7: What additional recreational facilities does your community need? (check all that apply)

Answered: 149 Skipped: 8

ANSWER CHOICES	RESPONSES
Groomed Winter Trails for Skiing, Snowshoeing or Fat-Tire Biking	26.85% 40
Covered Shelter for Picnicking/Events/Ice Rink	35.57% 53
Running Trails	22.82% 34
Hiking or Mountain Biking Trails	38.26% 57
Public Water Access- Beaches and Boat Launches	46.31% 69
ATV/ORV Trails	26.85% 40
Snowmobile Trails	14.09% 21
Indoor Gym	24.16% 36
Bike Paths	44.97% 67
Swimming Pool	32.21% 48
Additional Equipment Rental Opportunities	14.77% 22
Birding Platforms	16.11% 24
Other (please specify)	19.46% 29
Total Respondents: 149	



Powered by SurveyMonkey

Q7: What additional recreational facilities does your community need?

Comment responses:

bike & walking trail from Yacht Haven to 4 corners-badly needed or widened shoulders

take care of golf course-it's in good shape

wildlife sanctuary plan in place for old quarry pit

Modern restroom facilities at most traveled public areas, such as Township Park or Bog Shoal beach. Full service electric, water, etc at township park camping. Also easy access picnic tables, at easy access points for day visitors of visitors worth a long ride into town to enjoy a picnic, etc

Disc Golf Course

Paved bike paths

A full hook up campground

Bike paths for walkers and bikers. Not safe as there are no sidewalks

Better care of Twp Park ie: beach, sites, boat launch

Pickle ball court

Upgraded and maintained township park.

We need a area for our youth! I think a arcade and gaming building would be awesome! There is not enough to do here!

Trail from West end or Ferry Dock to 4 corners, for all activities including walking, biking, ATV, ORV

Roadside ORV access from ferry to 4 corners

Walking/running/biking trail along the shore. Town square/Main Street. Park (larger than Betsy Seaman). Park and photo opp spot by the ferry. Waterfront dining. Fishing pier.

Outdoor volleyball, CASUAL BIKING AND WALKING PATHS!!!!

none of these

horse trails- or let us use the existing trails

Shower and bathroom at D1. Two campground

Water slide

Create a shoreline perimeter road around the island with periodic scenic pull offs for picnicking, swimming launching a kayak or simply sightseeing

A place to watch the sunset? bike, walking paths near waters edge

Something for our kids to enjoy!

Expand GEM area

More quiet sports and less wheeled vehicles that disturb the environment and wildlife.

Buy shore frontage for fishing and boaters

Events to bring people to the island, like a enduro race

Winter trails for orv and kayak launches

Pump Out station at Twp Park Campgrounds

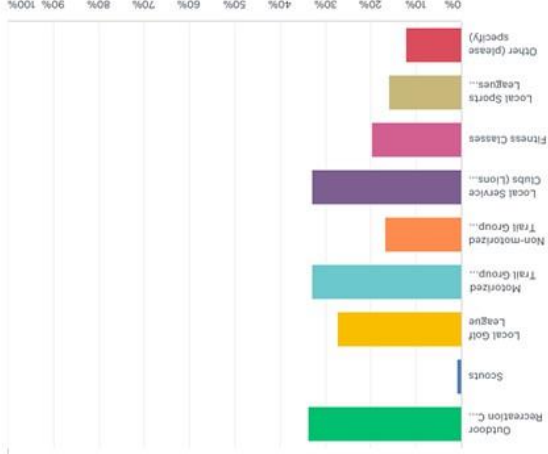
Shore Campground Bike Paths Island Park Wildlife Trail Golf
ORV Walking Paths Water Enjoy

Powered by  SurveyMonkey

Q8: Do you or your family participate in the following recreational opportunities (check all that apply)

Answered: 106 Skipped: 51

ANSWER CHOICES	RESPONSES
Outdoor Recreation Club (Lighthouse Preservation, DIGGERS, Sportman's Club etc.)	33.96% 36
Scouts	0.94% 1
Local Golf League	27.36% 29
Motorized Trail Group (ORV, Snowmobiling)	33.02% 35
Non-motorized Trail Group (Hiking, Biking)	16.98% 18
Local Service Clubs (Lions Club, Moose Lodge)	33.02% 35
Fitness Classes	19.81% 21
Local Sports Leagues (Basketball, Volleyball)	16.04% 17
Other (please specify)	12.26% 13
Total Respondents: 106	



Powered by SurveyMonkey

Q8: Do you or your family participate in the following recreational opportunities ?

Comment responses:

- no, because of my age (92)
- golf
- M134 Byways
- Steward of Michigan Nature Assoc. & Little Traverse Conservancy Properties
- My family used to use the county golf course all summer. We haven't stayed on Drummond for several years.
- None, I have a job
- none of these
- Michigan trail riders
- None at this time
- Friends of the Library
- Kayaking, birding, photography, fishing
- running in the 5k at Fall Fest
- Friends of the Library

Golf Friends of the Library Michigan

Powered by SurveyMonkey

Q9: What recreation programs would you like to have in your municipality?

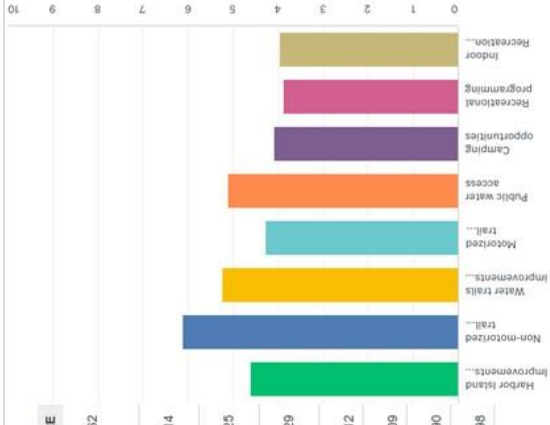
- walking groups
- indoor community pool and pavilion picnic area near fire hall with a minimum of 6-8 tables
- bike path walking path
- indoor walking in winter
- more walking-bike trails
- Better marked and more trails for utv.
- Better marked and more trails for utv.
- Better marked and more trails for utv.
- Would like to see more ORV trails.
- Dock & hiking trails on Harbor Island A bike lane along the Channel Road from the ferry to 4 corners A bike lane the length of Townline Rd from the settlement to 4 corners
- Open gym, track, tennis courts, running trails, biking trails, more public access beaches for swimming and boating
- Tennis. Sailing
- Pumpout Facility @ Twp. Park/Campgrounds
- Home "movie" presentation of vacations, nature "lectures"; Guided nature walks, tour of quarry, civilian response & emergency preparedness education, wilderness emergency medicine talk, night sky talks, navigation, reading the weather, history of the island, understanding the "terrains" of the island
- Disc Golf Course
- Widening of the road with a walking lane. We walk from two to ten miles every day and the Island has a lot of summer traffic. Lots of people would be walking if it was safer.
- Biking
- Boater education,
- Open walking space in winter months, exercise classes for older/disabled folks like chair exercise.
- An gym with workout equipment
- Pickleball
- More bicycling support, trails, maps, options.
- Public launches with dock
- Swimming pool for water aerobics
- Cycling clubs.
- I would love less bars and more things for FAMILIES to enjoy!
- fix (widen) the township park boat launch. trees are overgrowing the area needed to turn and back. gym would be great. Offering some senior or crossfit or organized classes. dedicated hiking/running/biking (non orv) trails something like Detours community pavillion would be nice. a central gathering point, that anyone could use for events. Then offer live music in the park events on occasion(in summer)
- Something that kids could enjoy as well as adults
- Double or triple fees for non residents. ORV/Jeepees misuse is rampant and distructive
- Hiking trails. Long hiking trails (backpacking or day hikes) to explore the shoreline or remote area. Trails where we don't have to always be dodging or listening to ORVs.
- Instructional classes, exercise (tennis, yoga), kids programs.
- Organize dirt bike races. We opened up our public trails to competition about 10-12 years ago and have yet to have any type of race
- Up to date workout center, public swimming pool, dog park
- Well groomed cross country skitrails. Also the restoration of the hiking trails on the east side of the Maxton Cut Across road, just south of Tourist Road.
- Exercise classes at various times of day (early morning &or evening)
- More equine trails, camp grounds
- Community boat launch with dock. Public restrooms
- A public pool for swimming. Sometimes the water... ok almost always the water is too cold and there's no easy place to enter with all the rocks.
- Provide recreational opportunities and access to locations on the island for visitors and residents that do not have expensive and highly specialized vehicles, i.e. off-road, 4x4 vehicles and/or ORVs. Visitors to the island are provided very limited recreational opportunities unless they own these types of vehicles and often leave very disappointed and frustrated. In many cases it is difficult if not impossible to reach scenic and noteworthy points on the island with conventional transportation.
- bike and walking paths. more opportunities to use the waterfront like more beaches or waterfront parks. Perhaps one in the N,E, W, and S sides
- swimming pools; more beaches
- I would like there to be a safe place for our kids to go to!
- A good public gym would be nice. A decent boat ramp facility with ample parking and several well maintained ramps with piers.
- Youth center
- activities for children 0-18 years
- basketball, volleyball,
- Strictly dirt bike trails, no quads or side by sides, and dirt bike rentals
- Local gym open to the public with work out equipment.
- Nature trails
- More activitie places for children and adults. Fun workout classes, workout out place.
- 3 on 3 basketball, beach volleyball, bike tour
- Anything that is considered a 'quiet' sport. We don't need anymore ORV trails disturbing what little solitude our wildlife enjoys.
- A public marina. Birdwatching platforms. Outdoor education programs.

Beaches Basketball Tennis Indoor Swimming Children ORV Workout
 Public Kids Trails Exercise Classes Bike Center Walking
 Facility Island Enjoy Education

Q10: In respect to recreation, over the next 5 years, where should the Township direct its resources? (please rank with 1 as the highest priority)

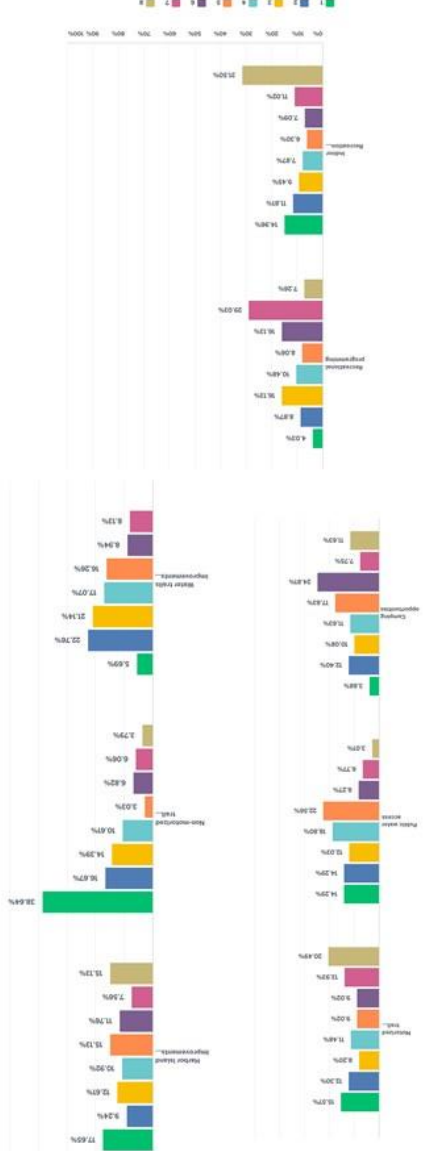
Answered: 151 Skipped: 6

	1	2	3	4	5	6	7	8	TOTAL SCORE
Harbor Island Improvements (maintenance, signage, amenities)	17.65%	9.24%	12.61%	10.92%	15.13%	11.76%	7.56%	15.13%	119
Non-motorized trail improvements and development	38.64%	16.67%	14.39%	10.61%	3.03%	6.82%	6.06%	3.79%	132
Water trails improvements and development	5.69%	22.76%	21.14%	17.07%	16.26%	8.94%	8.13%	0.00%	123
Motorized trail improvements and development	15.57%	12.30%	8.20%	11.48%	9.02%	9.02%	13.93%	20.49%	122
Public water access	14.29%	14.29%	12.03%	18.80%	22.56%	8.27%	6.77%	3.01%	133
Camping opportunities	3.89%	12.40%	10.08%	11.63%	17.83%	24.81%	7.75%	11.63%	129
Recreational programming	4.03%	8.97%	16.13%	10.48%	8.06%	16.13%	29.03%	7.26%	124
Indoor Recreation Opportunities	14.96%	11.81%	9.45%	7.87%	6.30%	7.09%	11.02%	31.50%	127



Powered by SurveyMonkey

Q10: In respect to recreation, over the next 5 years, where should the Township direct its resources? (please rank with 1 as the highest priority)

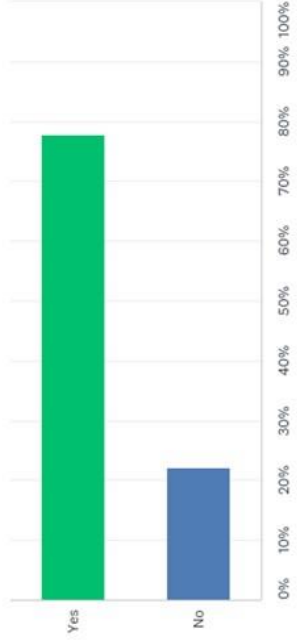


Powered by SurveyMonkey

Q11: Would you be willing to pay a nominal fee for entrance to improved parks and recreational facilities?

Answered: 154 Skipped: 3

ANSWER CHOICES	RESPONSES
Yes	77.92% 120
No	22.08% 34
TOTAL	154



Powered by SurveyMonkey

Q12: What is your age?

Answered: 155 Skipped: 2

ANSWER CHOICES	RESPONSES
Less than 18 years old	0.65% 1
18 to 24 years old	6.45% 10
25 to 44 years old	23.87% 37
45 to 64 years old	45.16% 70
More than 65 years old	21.94% 34
I prefer not to answer	1.94% 3
TOTAL	155



Powered by SurveyMonkey

APPENDIX C: PROJECT RESOURCES (SITE PLANS, ETC.)

As the plan is carried out, this is where site plans, resolutions of support, funding commitments, and the like should be placed.

Name of Document:

Photo of Document:

APPENDIX D: PUBLIC NOTICES & ADOPTION MEETING MATERIALS

30-DAY REVIEW PERIOD NOTICE

Date of the Notice: The Sault Evening News, _____

Type of the Notice: Newspaper announcement in the Sault Evening News.

Plan Location: At the Drummond Island Township Hall and library from date _____ or online at _____

Duration of Draft Plan Public Review Period: April _____

Copy of the Notice: All notices are below

PUBLIC HEARING

Date of Notice: April _____

Name of Newspaper: The Sault Evening News

Date of Meeting: _____

Copy of the Notice: see below

MINUTES FROM PUBLIC MEETING

COPY OF ADOPTION MEETING MINUTES

COPY OF LETTER TO REGIONAL PLANNING AGENCY

APPENDIX E: POST-COMPLETION SELF-CERTIFICATION REPORTS

Upon submitting this plan for review, Drummond Island Township had no projects which required a report.